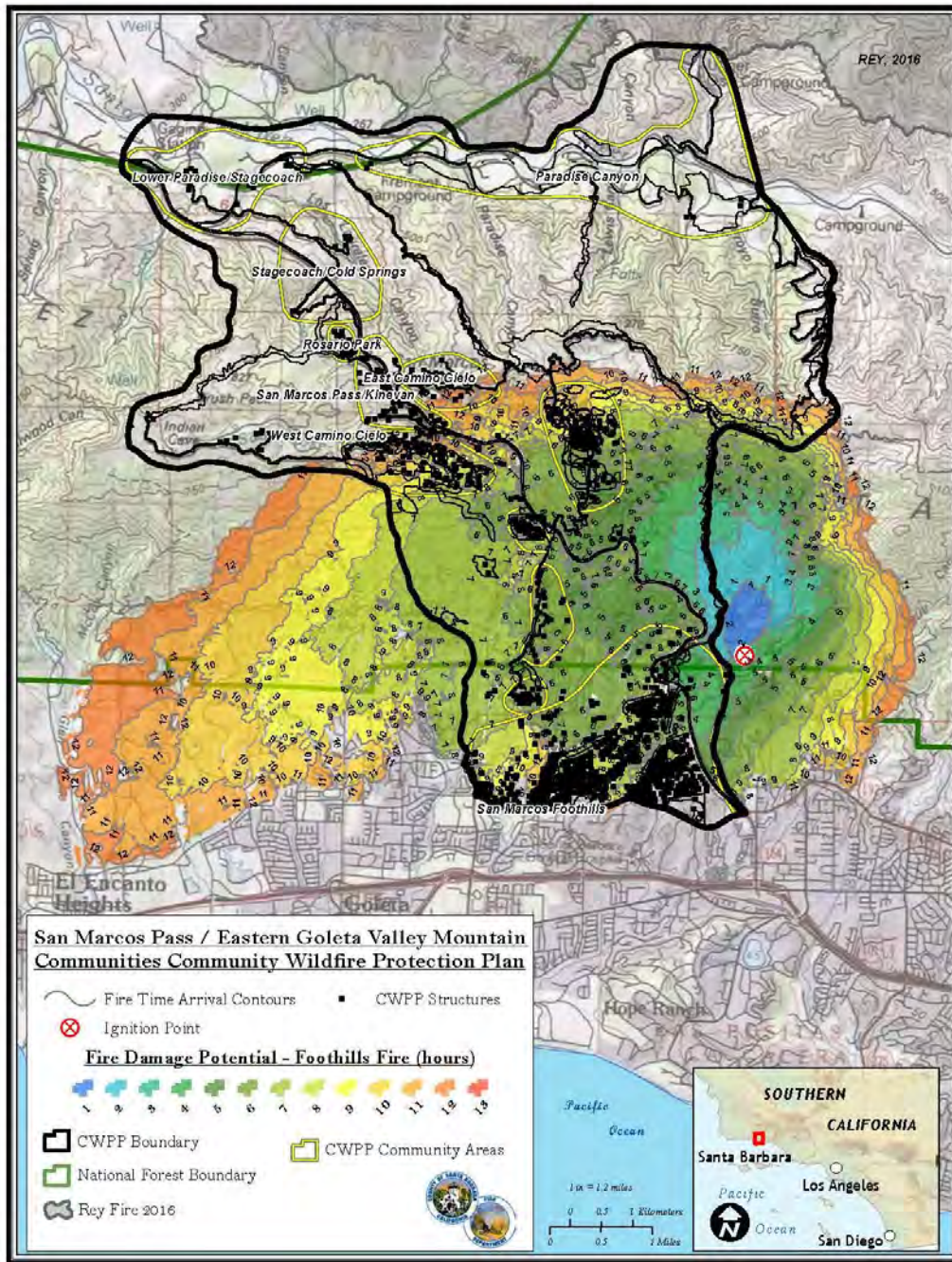


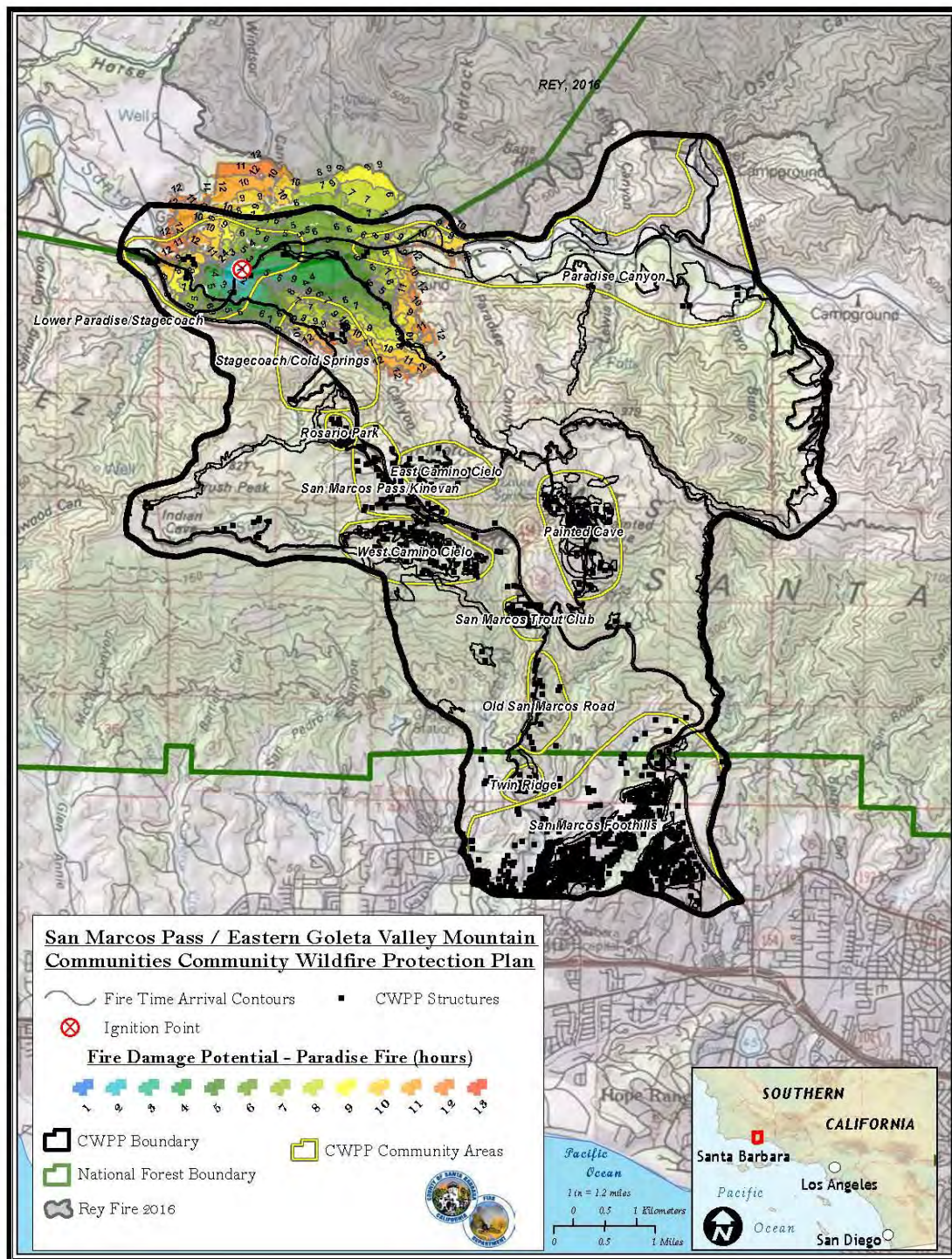
Appendix A. Modeled Fire Damage Potential with Various Scenarios



Foothill Fire simulation

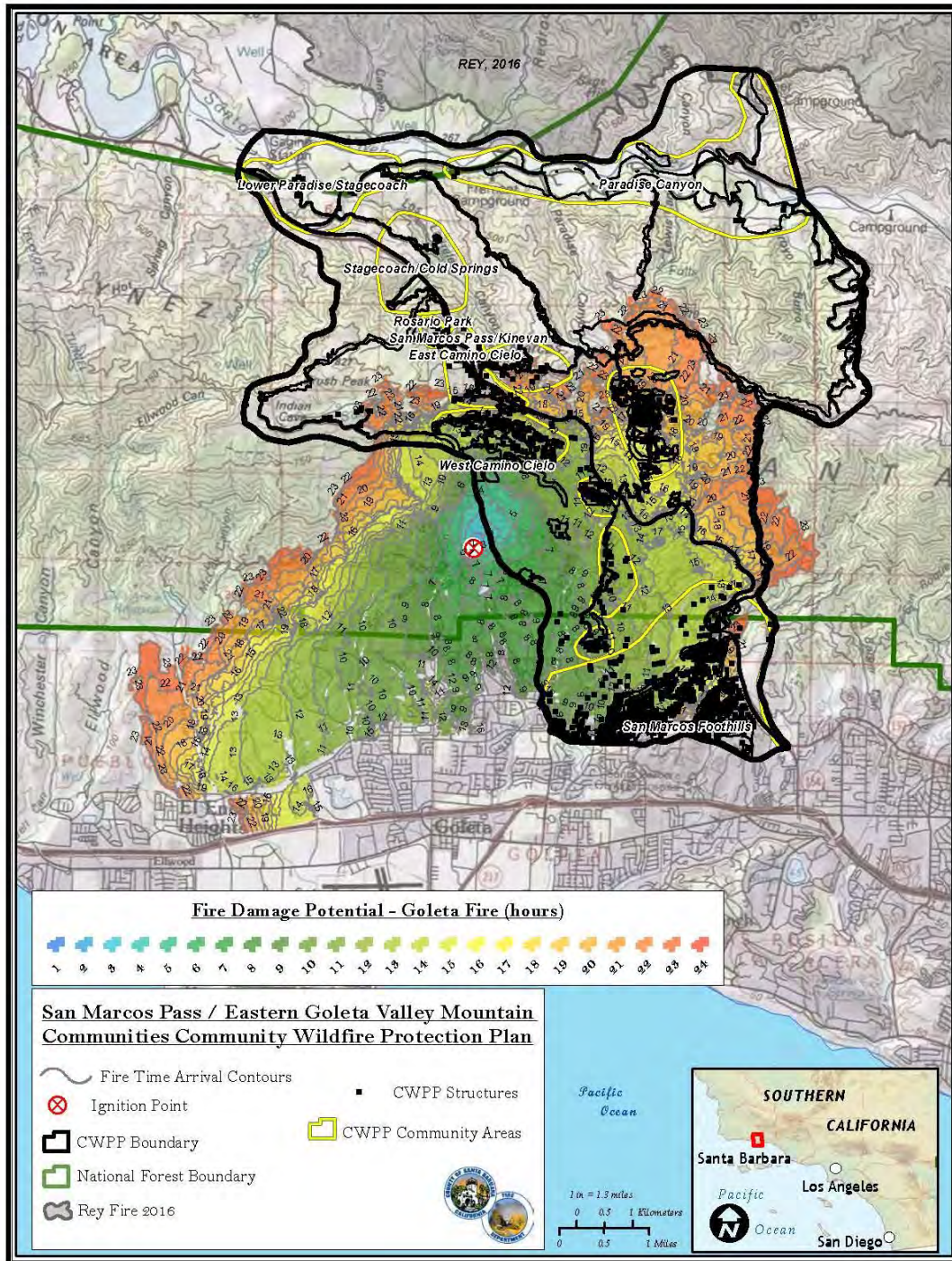
- August 1, 1430 hours, 87°, 20% RH, Wind 12G15mph S190°
- Powerline ignition
- 12 hour run

Transitions to northeast sundowner at 1830 hours. 95°, 12% RH, Wind 20G30 NE045°.



Paradise Fire simulation

- August 26, 1530 hours, 100°, 15% RH, Wind 15G18 mph WNW280°
- Roadside ignition
- 12 hour run



Goleta Fire simulation

- July 14, 1500 hours, 90°, 20% RH, Wind 15G18mph SW200°
- Powerline ignition
- 24 hour run

Transitions to northeast sundowner at 2100 hours. 95°, 12% RH, Wind 20G30 NE045°.